

CHAPTER 6. DISASSEMBLY PROCEDURE

If, in carrying out repairs and modifications, the work requires the use of arc- and flame-producing apparatus, such as welding , brazing and soldering equipment, this work shall only be started after the rooms have been thoroughly ventilated. While the work is being carried out , the mechanical ventilation, if any, shall be kept in constant operation and all windows and doors kept open. In the case of repairs to parts of the refrigerant circuit, it may be necessary that not only the workman but also a second person shall be present for observation and assistance.

Necessary protective equipment shall be available and, in the case of open flames or arcs, fire extinguishing apparatus shall be ready to hand. Welding and brazing shall be carried out by qualified workmen.

Be sure to disconnect the power cord from the AC power outlet before starting the disassembly procedure. When reassembling the unit after repairing, be sure to install screws to their original positions.

The screws used are not the same in specifications such as corrosion-resisstant treatment, tip shape and length.

After the air conditioner is repaired or parts are replaced, measure insulation resistance of the equipment using an insulation resistance meter. If the measured resistance is lower than 1MΩ, inspect parts and repair or replace defective parts.

Before changing control board, the workmen should wear anti-eletrostatic gloves.

[1] INDOOR UNIT

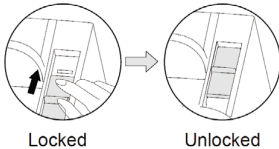
1. INDOOR UNIT

1) Push the handles up to remove Air filter .

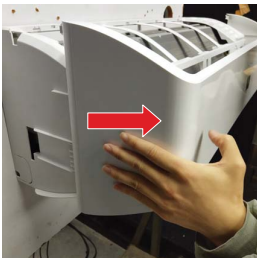


2) Remove Open Panel as below step.

- Unlock Panel Lock (Right and left side).



- Lift the Open Panel up, then Slide the Open Panel' Hook along the Guide to remove it (right and left side).



4) Remove a scerw fixing the Cord Holder, then take the Cord Holder out.



5) Loose the screw on Terminal Board and remove Unit-to-unit wiring.



- 6) Remove Horizontal Louver (H-louver).
 - Take the center Bearing out.



- Take the left side Louver Bushing out.



- Take the Horizontal Louver (H-louver) out.



- 7) Remove 2 screws fixing the Front Panel.



Pull the top side of Front Panel to release the hooks.



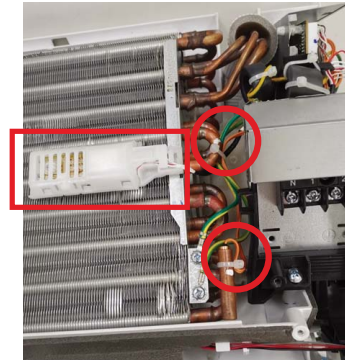
Pull this side to release these hooks.



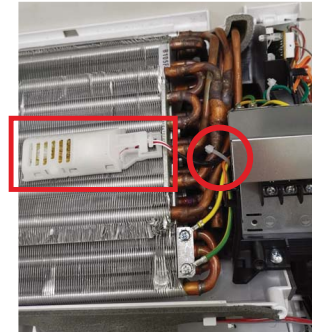
Press below position to unfasten the hooks in side of Front Panel, then take the Front Panel out.



- 8) Cut the Wire Fixing Band and remove the Thermistor.
(CLC6001i-W 25/35 E, CLC6101i-W 50 HE)



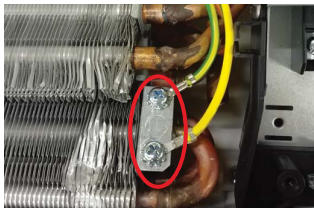
(CLC8101i-W 65 HE(R/S/T), CLC8001i-W 25/35 E(R/S/T))



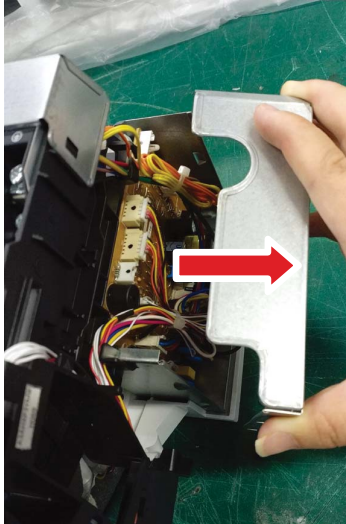
(CLC6101i-W 65 HE)



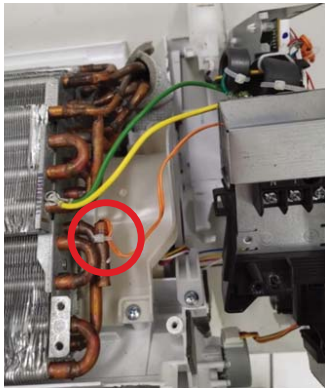
9) Remove 2 screw fixing the Ground wire.



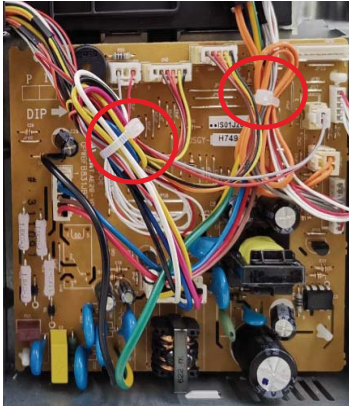
10) Take off the Control Box Cover.



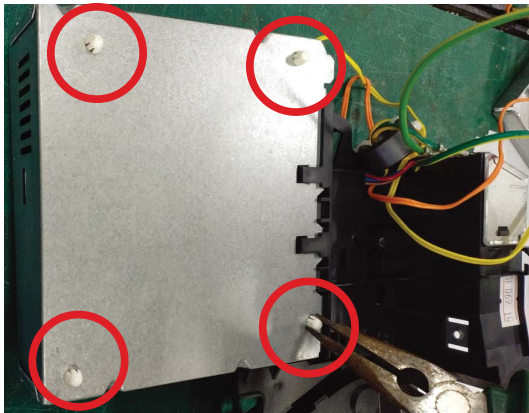
(CLC6101i-W 65 HE)



11) Cut the wire fixing band and remove all the connectors.

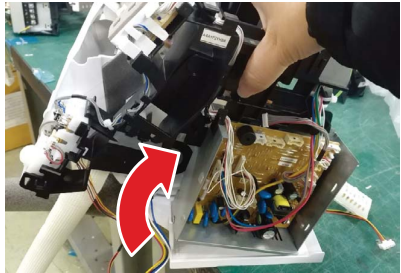


14) Use a pincer to press the 4 spacer into the Control Angle to remove the PWB.



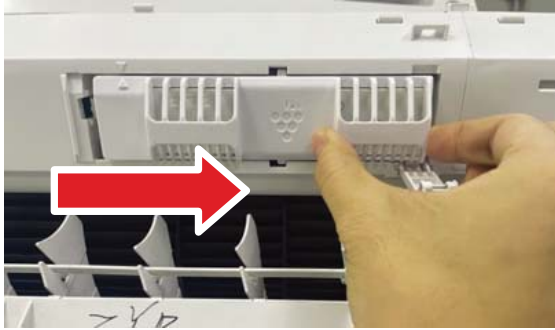
12) Remove 1 screw, then rotate the Control Unit as below to take it out.

15) Remove PCI UNIT.
(CLC8101i-W 65 HE(R/S/T), CLC8001i-W 25/35 E(R/S/T))
- Press the hook to rotate the PCI LOCK

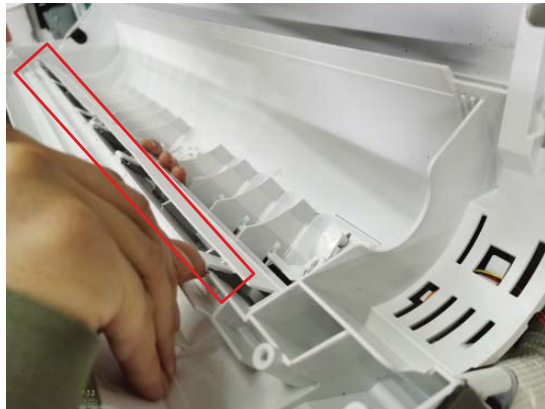


13) Cut the Wire Fixing Band and remove the Thermistor.
(CLC8101i-W 65 HE(R/S/T), CLC8001i-W 25/35 E(R/S/T))

- Slide the PCI cover to right side, then lift it to take it out



- Release the hook of Stabilizer R&L Ass'Y, rotate Stabilizer R&L Ass'Y out.

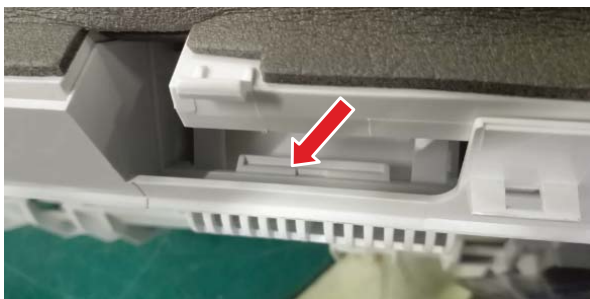


- Loosen the screw of the PCI JOINT PWB UNIT B, take the PWB out.



(CLC6001i-W 25/35 E, CLC6101i-W 50/65 HE)

- Release the hook of PCI Cover

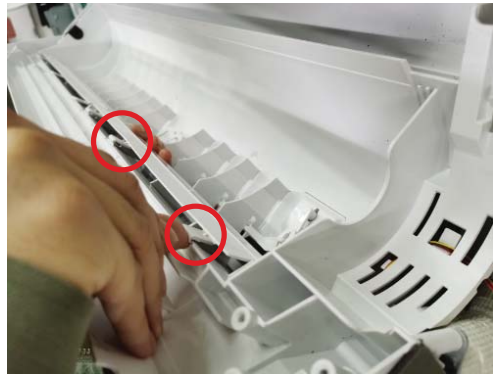


- Take PLASMACLUSTER Unit out. Then remove the connector.



16) Remove Center LED UNIT.

- Release the hook of Stabilizer R Ass'Y, rotate Stabilizer R Ass'Y out.



- Release a hook, take out the LED CASE, then take the center LED CASE out.



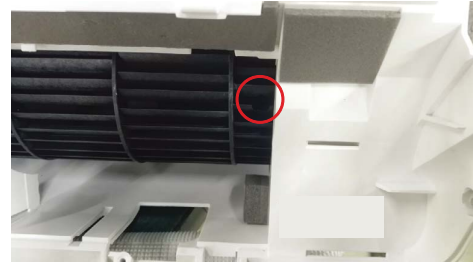
- Press the hook, take out the PCI LED UNIT.



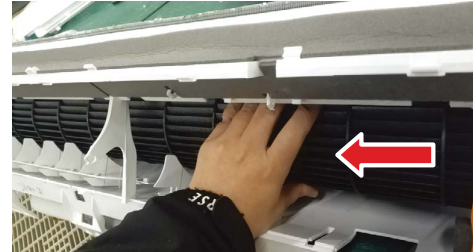
- Unfold the LIGHT GUIDE COVER, take out the LIGHT GUIDE.



17) Remove the screw of Louver Motor, then take the Motor out.



23) Hold and press the Cross Flow Fan to left side as much as possible, meanwhile, take Fan Motor out.



18) Release Arm Auto/Manual from Louver Link R.



19) Remove the screw of Bracket, and take Bracket out.



20) Remove the 2 screws of Louver Motor V to take the motor out.



24) Remove a screws of Side Cover R.



21) Remove 2 screw fixing the Fan Motor Cover, then remove Fan Motor Cover.



25) Remove 2 screws fixing Side Cover L.



22) Remove 1 screw between Cross Flow Fan and Fan Motor.

26) Push the Pipe Holder to remove Pipe Holder.



27) Enlarge the angle between Tube Ass'y and Cabinet. Then take the Evaporator out.



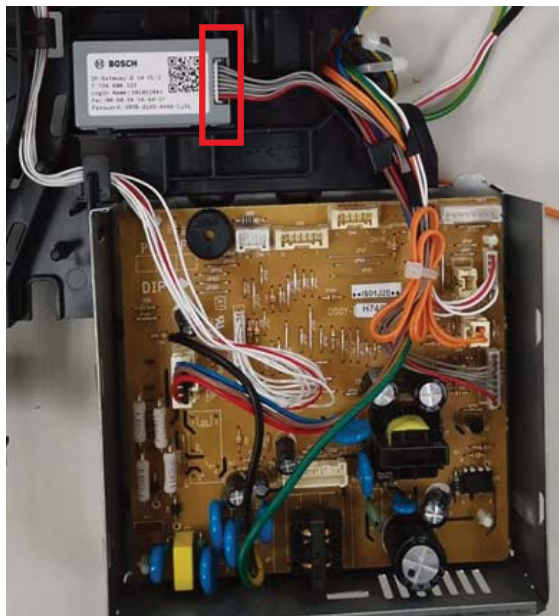
28) Take Corss Flow Fan out.



REPLACE WIRELESS ADAPTER

Maintenance shall be made by service personnel full of knowledge about wireless LAN.
Please contact BOSCH for replacement.

1) Remove the Connector of Wireless adapter, and take it off from Control unit.



2) Replace the Wireless adapter.

3) It's necessary to make the Wireless Lan connecting setting again.
Please finish the initial connection setting after replaced wireless adapter, the procedure is same as when you just purchased the Air-conditioner.